

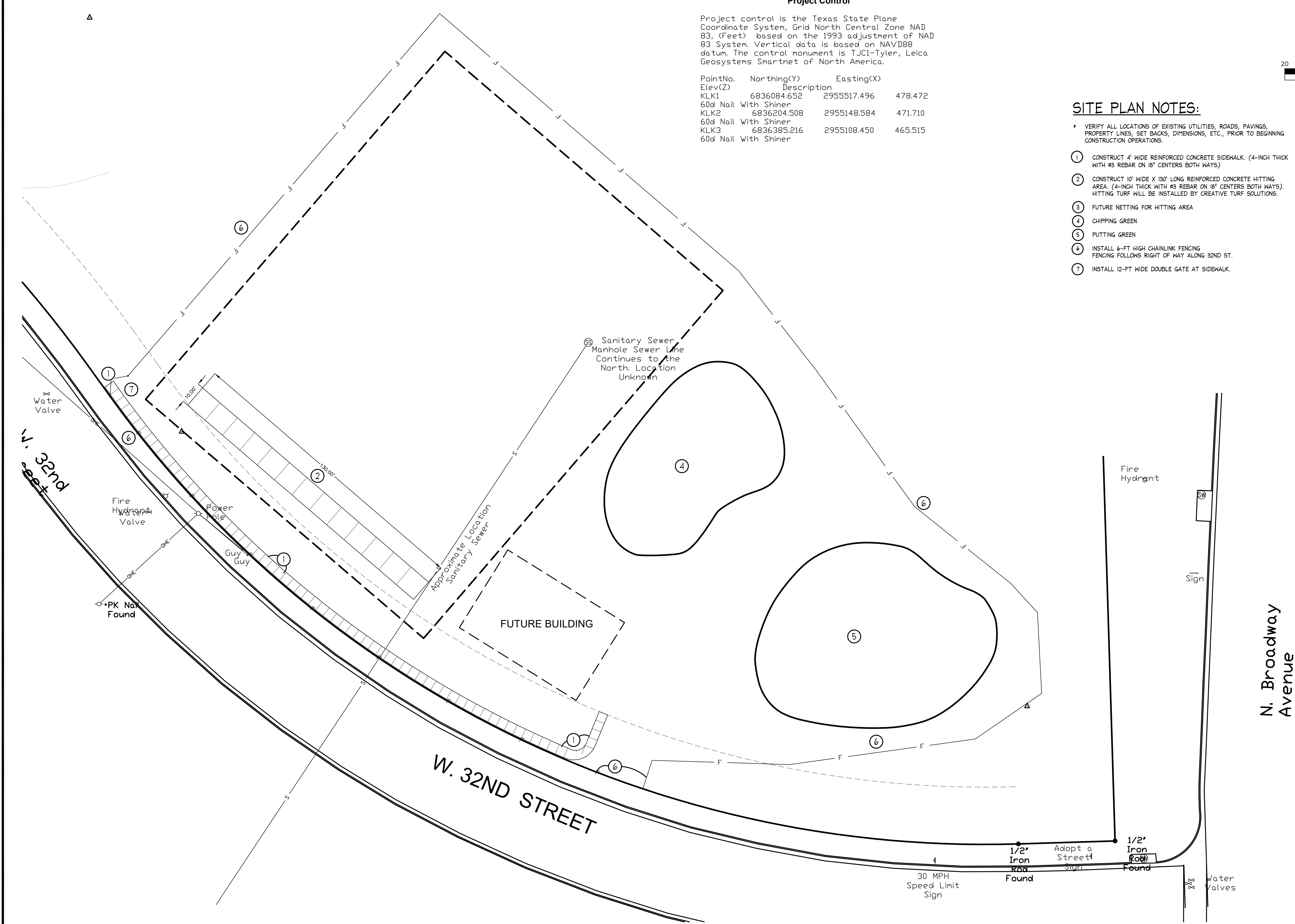
**Project Control**

Project control is the Texas State Plane Coordinate System, Grid North Central Zone NAD 83, (Feet) based on the 1993 adjustment of NAD 83 System. Vertical data is based on NAVD88 datum. The control monument is TJCI-Tyler, Leica Geosystems Smartnet of North America.

PointNo.	Northing(Y)	Easting(X)	Elev(Z)	Description
KLK1	6836084.652	295517.496	478.472	60d Nail With Shiner
KLK2	6836204.508	2955148.584	471.710	60d Nail With Shiner
KLK3	6836385.216	2955108.450	465.515	60d Nail With Shiner

**SITE PLAN NOTES:**

- \* VERIFY ALL LOCATIONS OF EXISTING UTILITIES, ROADS, PAVINGS, PROPERTY LINES, SET BACKS, DIMENSIONS, ETC., PRIOR TO BEGINNING CONSTRUCTION OPERATIONS.
- ① CONSTRUCT 4' WIDE REINFORCED CONCRETE SIDEWALK. (4-INCH THICK WITH #3 REBAR ON 18" CENTERS BOTH WAYS)
- ② CONSTRUCT 10' WIDE X 130' LONG REINFORCED CONCRETE HITTING AREA. (4-INCH THICK WITH #3 REBAR ON 18" CENTERS BOTH WAYS). HITTING TURF WILL BE INSTALLED BY CREATIVE TURF SOLUTIONS.
- ③ FUTURE NETTING FOR HITTING AREA
- ④ CHIPPING GREEN
- ⑤ PUTTING GREEN
- ⑥ INSTALL 6-FT HIGH CHAINLINK FENCING FOLLOWS RIGHT OF WAY ALONG 32ND ST.
- ⑦ INSTALL 12-FT WIDE DOUBLE GATE AT SIDEWALK.



1321 SOUTH BROADWAY  
 TULSA, OKLAHOMA 74106  
 (905) 597-2322

**BRANNON CORP**  
 CIVIL ENGINEERS

THE STATE OF TEXAS  
 PROFESSIONAL ENGINEER  
 #2542  
 WWW.BRANNONCORP.COM

**SITE PLAN**  
 FOR  
**WOLDERT PARK PHASE 1**  
**1ST TEE OF GREATER TYLER**  
 TYLER, TEXAS

NO.	DATE	REVISIONS	REMARKS

ISSUED FOR:  
**PRELIMINARY**  
 FOR  
**REVIEW ONLY**

PROJECT NO. XXXXX  
 SHEET NO.  
**1**

© COPYRIGHT 2019 THE C.T. BRANNON CORPORATION. UNAUTHORIZED REUSE OR REPRODUCTION IS PROHIBITED.